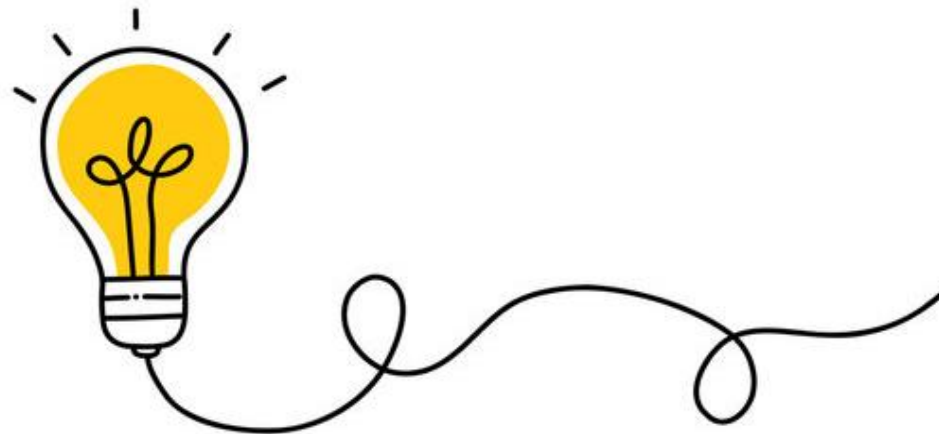




# Choosing university and the Russell Group

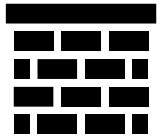
Supporting your young person's  
next steps



# The aims of this session are...



To discuss reasons why people might choose to go to university.



To weigh up how your young person can choose the right course for them.



To explore different university options, and The Russell Group.



# UCL Access and Widening Participation

## Our aim:

- To ensure that all applicants have an equal chance of entering UCL, regardless of background, ethnicity, age or disability.
- To achieve this, we design programmes to help eliminate gaps in access between the most and least represented groups of students at UCL.
- The least represented students at UCL include (amongst others):
  - Students who attend non-selective state schools
  - Students whose parents did not attend university
  - Students who live in neighbourhoods with low progression rates to university.





# How many higher education institutions are there in the UK?

160+

<https://www.studyin-uk.com/uk-study-info/university-rankings/>





# How many higher education institutions are in the Russell Group\*?

24



# How many courses are there at UK universities in total?

**50,000 +**

[\\*ucas.com/undergraduate/applying-university/international-and-eu-students/applying-university-international-student/why-study-uk](https://ucas.com/undergraduate/applying-university/international-and-eu-students/applying-university-international-student/why-study-uk)



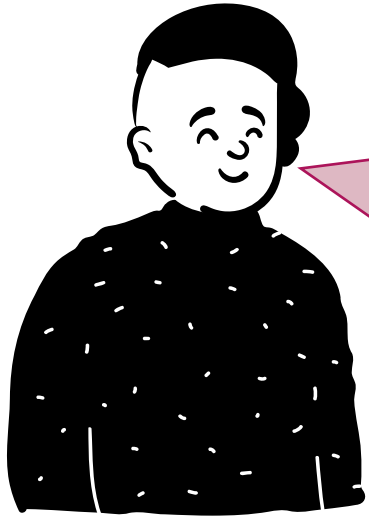
**Why go to  
university?**

**Why not go?**





# I want to go to university because...



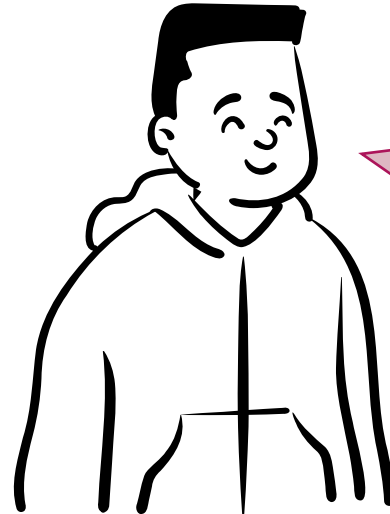
I want to study  
my favourite  
school subject in  
greater depth.



I want to meet  
new people and  
gain more  
independence.



I have a specific  
career in mind  
and university  
will help me to  
get there.



I want to gain  
transferrable  
skills and learn  
something  
completely new  
to me.



# Some reasons you might not want to go to university...

You don't need a degree for some professions

Not wanting to study full time any longer

The cost and debt

You want to stay close to home, but university options are limited

Prefer to learn whilst working

Didn't get round to researching and applying

Exam grades


Some graduates are in non graduate jobs

Need more experience before applying to a vocational course at uni

No particular subject idea you are interested in






# Career/degree subject bingo

**Discussion:** What degree do you think these individuals did at university, based on their job title?

 <div>1</div> <p>Press Officer - Vintage</p>	 <div>2</div> <p>Trading Director</p>	 <div>3</div> <p>Senior Consultant</p>	 <div>4</div> <p>Business Strategy Analyst</p>
 <div>5</div> <p>Trainee Solicitor</p>	 <div>6</div> <p>Publications and Policy Officer</p>	 <div>7</div> <p>PhD Student - Biotechnology</p>	 <div>8</div> <p>Media Officer</p>

Most employers *don't require* you to have *a specific degree*, but many *require* you to have *a degree*.

# Answers

 <p>1</p> <p>Press Officer – Vintage English Literature</p>	 <p>2</p> <p>Trading Director Medical Physiology</p>	 <p>3</p> <p>Senior Consultant Music</p>	 <p>4</p> <p>Business Strategy Analyst History</p>
 <p>5</p> <p>Trainee Solicitor Business and Management</p>	 <p>6</p> <p>Publications and Policy Officer Geography</p>	 <p>7</p> <p>PhD Student – Biotechnology Medicinal Biochemistry</p>	 <p>8</p> <p>Media Officer Politics and Philosophy</p>

## Key statistics

**67.9%** of working age (16-64 years old) graduates were in **high-skilled employment** in 2024, compared to 23.7% of non-graduates.

**£42,000** was the **median nominal salary** for working age (16-64 years old) graduates in 2024, compared to £30,500 for non-graduates.



# What things should you consider when choosing your course?



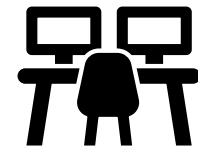
**What do you enjoy? What are you passionate about?**



**What topics or subjects would you like to learn more about?**



**What qualifications or grades does the course require?**



**Do you want to work in a particular field? Do you have a particular career in mind?**

# 400+ courses

Chemistry with  
Management  
Studies BSc/MSci

Geography and  
Economics BSc

Icelandic BA

History with a Year  
Abroad BA

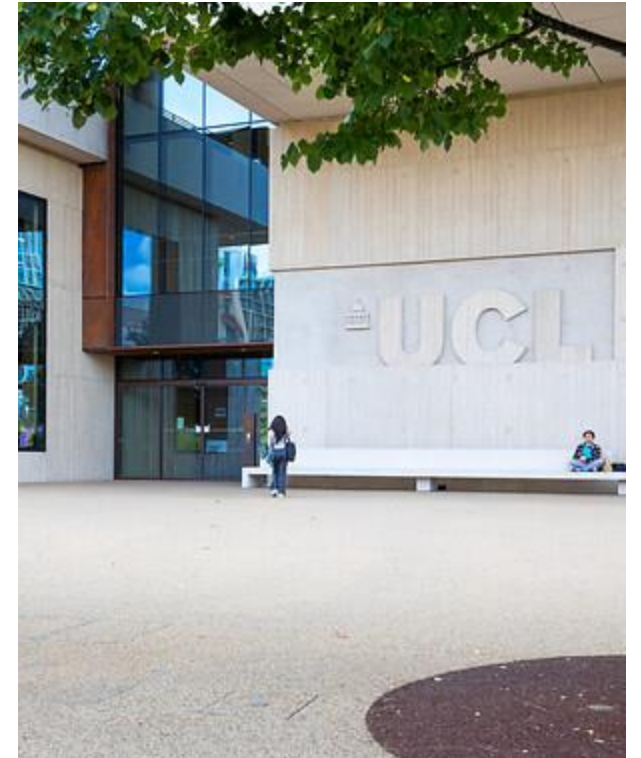
Arts and Sciences  
BASc

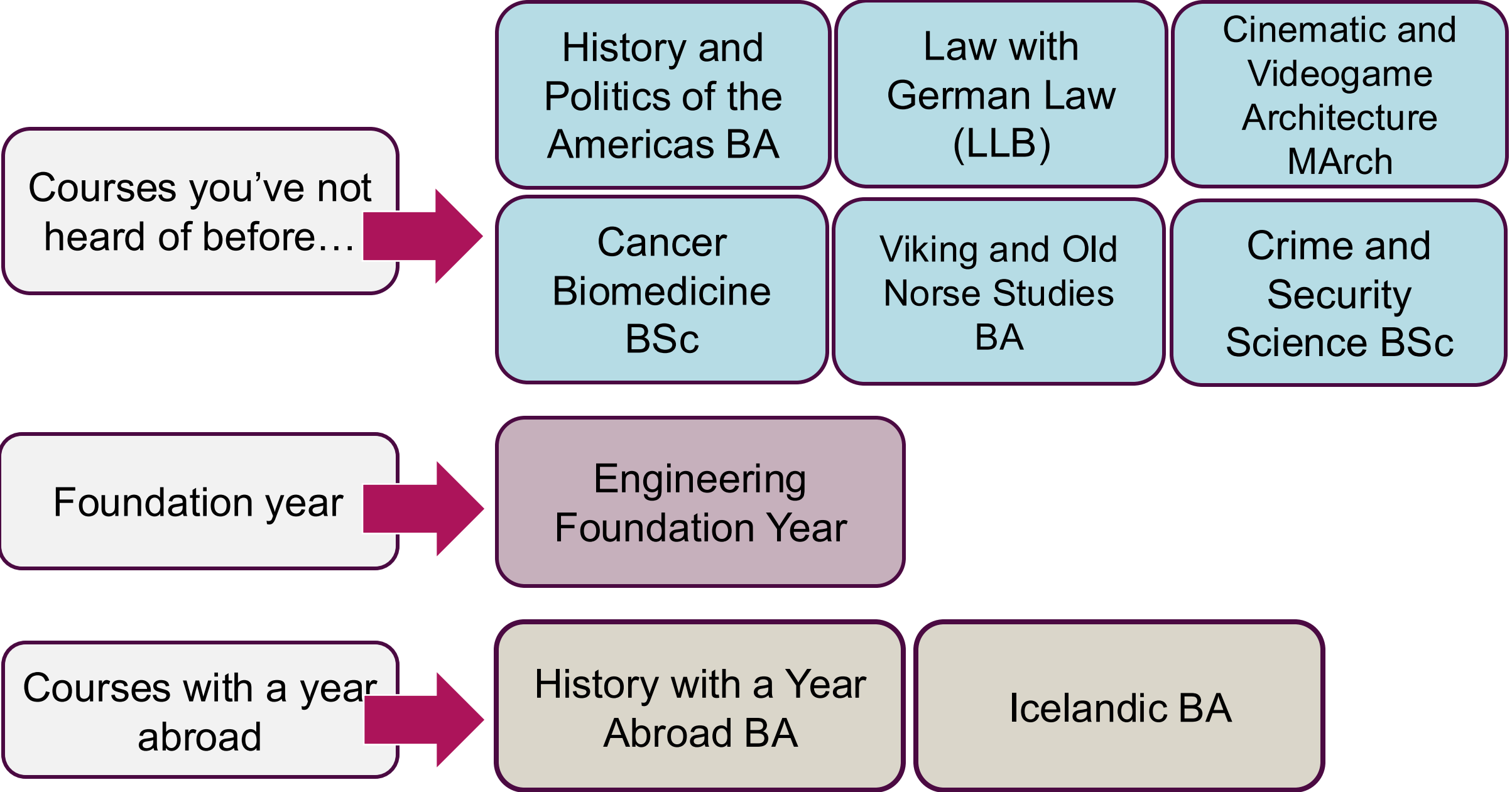
Robotics and  
Artificial  
Intelligence MEng

Engineering  
Foundation Year

Human Sciences  
BSc

Creative Arts and  
Humanities BA







Courses which have  
the option of  
integrating a masters



Chemistry with  
Management  
Studies BSc/MSci

Robotics and  
Artificial Intelligence  
MEng

Joint honours course



Mathematics with  
Modern Languages  
BSc

Geography and  
Economics BSc

Combined studies  
courses



Arts and Sciences  
BAs

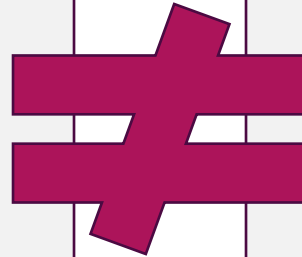
Human Sciences  
BSc

Creative Arts and  
Humanities BA

## English Literature BA, University of Warwick

### Optional modules examples

American Horror Story  
The English Nineteenth Century Novel  
Literature, Environment, Ecology  
Tales of Terror: Gothic and the Short Form  
US Writing and Culture, 1780-19  
Romantic and Victorian Poetry  
Queering the Literary Landscape  
American Poetry  
Early Modern Drama  
Women and Writing  
The Classical Tradition



## English Literature BA, Newcastle University

### Optional modules examples

Introduction to Creative Writing  
Contemporary Cultures  
Renaissance Bodies  
Writing New Worlds, 1688-1789  
Poetry Workshop  
Theatre Script Workshop  
Prose Workshop  
Screenwriting Workshop  
Stagecraft in Early Drama  
Literatures of Decolonisation  
Overseas Exchange

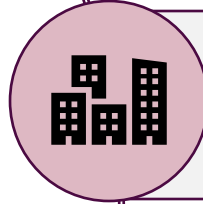
# Choosing the right university for you



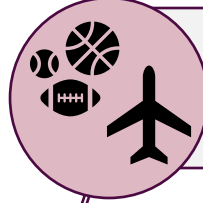
Choosing a course which you are interested in should be the most important factor in choosing a university.



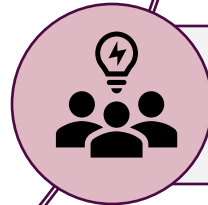
Do you want to live at home / close to home or move away?



What accommodation does the university offer students? Is it guaranteed?



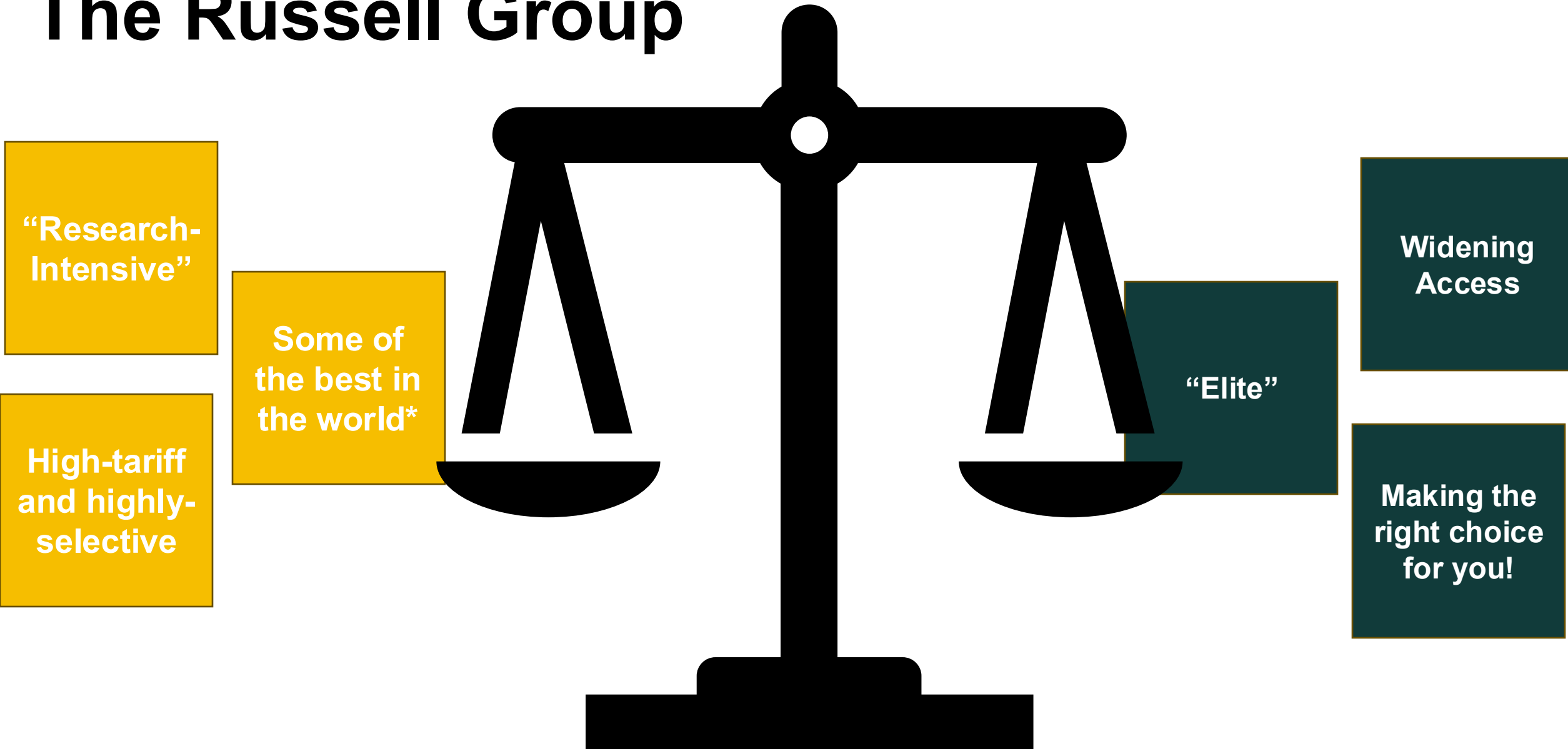
What facilities and opportunities does the university offer students?



How do you feel about the university's ethos, culture or vibe?



# The Russell Group





2026 entry

A photograph of two young Black women sitting at a table. The woman on the left is smiling broadly, wearing a yellow Brazil soccer jersey with 'BRASIL' and a crest, a blue lanyard, and a tan headwrap. The woman on the right is also smiling, wearing glasses and a dark jacket. In the background, another student is visible. The image is overlaid with a pattern of yellow and magenta rounded rectangles.

# Access UCL

## UCL's Contextual Offer Scheme

The information contained in the following slides is for 2026 entry only. Policies change each year so be sure to check the eligibility requirements in the year you are applying.

# What is Access UCL?

Eligible applicants, if selected for an offer, receive a contextual offer that is lower than the standard offer for their chosen programme



**Access  
UCL**  
2026 entry

**More information:**



**Further questions:**

Visit our online prospectus to find individual programme requirements





You might be eligible if you attend a UK state school for your A Levels/IB Diploma and meet one of the following criteria:

**You live in an area of high financial, social or economic deprivation\***

**You live in an area of low progression to higher education†**

**You have been registered for Free School Meals**

**You are estranged from your parents**

Care experienced applicants may be eligible if they have attended a UK state or independent school

[wp.accessucl@ucl.ac.uk](mailto:wp.accessucl@ucl.ac.uk)



**Access  
UCL  
2026 entry**

**Use our  
postcode  
eligibility  
checker:**



\* IMD Q1

† TUNDRA LSOA Q1

# Next steps

- ✓ List the careers your young person is interested in
- ✓ Research which courses lead to these careers
- ✓ Consider the subjects they are passionate about
- ✓ Look at the UCAS website and explore their post-18 options
- ✓ Attend open days
- ✓ Encourage them to take part in extra-curricular academic activities



# Year 12 opportunities in 2025/26 at UCL – When will applications open?



Scan our QR code for more information!

**UCL Expand** - A hybrid subject focused academic programme, created and delivered by UCL postgraduate students and staff.



**Masterclasses** - Online, subject-specific, hour-long sessions running from February to April.



**Summer Schools** - every year we run a series of Summer Schools in partnership with the Sutton Trust. We have a wide range of subjects to choose from, designed to give you a taste of studying at University.

**The Discover UCL Summer School** is an exciting opportunity exclusively for deaf and hard of hearing students in Year 12 to find out more about university.



**September / October**



**Experience UCL** - An opportunity for young people from our priority groups to visit UCL before Christmas (care experienced and estranged students, young carers, forced migrants and students with disabilities).

**November**

**UCL Choices**



**Choices** - Subject-specific sessions, run in spring, which will give you an insight into UCL courses that you can study with your current A Level options.

**December**

**Insights Day** - Are you in Year 12 and unsure what degree to study at university? Fancy trying out a new subject you've not done at school? If that sounds like you, then UCL's Insights Day is the perfect chance for you to explore your options.

**January**

**Departmental Taster Days** are in-person, subject-specific taster days running in June for Year 12 students to get a taste of university level study.

**March / April**

**Personal statement workshops** Online and in-person sessions to support you with writing your personal statement, delivered in June.



**UCL**

# Expand

Think

Solve

Research

Communicate

Expand your learning

Find out more



# UCL Expand



UCL Expand

Check out our website for more information and to complete an application form.

